

# Year 2 Meet the Teacher

## Sacred Heart Primary

### School



Welcome!





# Who is Who?



- Miss Sheehan- Class Teacher
- Mrs Stenning - Teaching and Learning Assistant
- Ms Andreasik - Teaching and Learning Assistant
- Mrs Coney - Teaching and Learning Assistant
  - Mrs Fogg - Music Teacher
  - Mrs Taylor - French Teacher





# Start and End of the Day



- Children are expected to enter school between 8:45am and 9:00am through the Main School Entrance.
- If your child is absent, please contact the school.
- Children should be collected at 3:10pm from the Main School Entrance.
- If for any reason you are late, please notify the Main Office.
- Please inform us if your child is being collected by someone else by phoning the school office or via email.

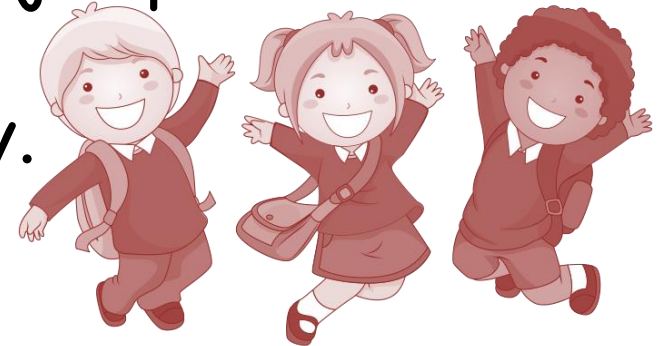




# Uniform



- All school uniform and kit should be clearly named.
- Every Wednesday and Friday, pupils should come to school wearing their PE kit.
- Indoor PE kit: Sacred Heart maroon t-shirt, navy blue school shorts or skort, white socks and trainers.
- Outdoor PE kit: Sacred Heart tracksuit jumper and bottoms, white socks and trainers.
- Children should not be wearing jewellery.
- Hair tied back for school at all times.





# Equipment



- Children should bring their book bag to school every day with their Reading Record and reading books.
- Every child should have a water bottle (and a packed lunch if they have one).
- Your child will need to bring in a coat as the weather becomes cooler.
- Fruit is provided as a healthy snack at break time.
  - If your child brings their own snack, it should either be a piece of fruit or a fruit bar (no nuts/chocolate/crisps).





# Behaviour



## Rewards

- ✓ Stickers
- ✓ Beanstalk
- ✓ Marbles
- ✓ Star of the Week
- ✓ Prize Box
- ✓ Headteacher Award
- ✓ Postcards

## Consequences\*

- ✗ Timeout
- ✗ Reflection activity
- ✗ Discussion with another teacher
- ✗ Discussion with the headteacher
- ✗ Consequence card

\* Please note that while in some instances the consequences escalate as written - this may not always be the case.



# Relational Approach



**RESTORATIVE APPROACHES**

**Attachment Aware Schools Award**

**Attachment Aware Schools Award**

**10 top tips for being the best attachment figure in the classroom**

**What can I do?**

**Let's help every child thrive.**

**Why Do We Have Thrive?**

**The ZONES of Regulation**

**GO**

**REST AREA**

**SLOW**

**STOP**

**How can you help yourself?**

**There is a reason for every behaviour.**

**thrive**



# Curriculum



- Our theme for this term is Beside the Seaside:
  - All learning will link to the seaside wherever possible to contextualise learning.
- English Focus:
  - Phonics
  - Reading and comprehension skills.
  - Grammar, Spelling and Punctuation 'Non-negotiables'.
- Mathematics:
  - White Rose curriculum.
- Curriculum map issued every term.
- A weekly email will be sent out every Friday:
  - Any changes to school routines and events will be communicated via email.









# Phonics and Early Reading



- You will already be familiar with our phonics and early reading scheme from Y1
- Little Wandle: Revised Letter and Sounds:
  - A completely consistent approach to planning, resources and delivery.
  - Related resources, decodable reading books, letter formation phrases, mnemonics.

	Revisit and review
	Teach and practise
	Practise and apply
	Grow the code
	Reading practice session three times a week



# Phonics and Early Reading



- Daily phonics sessions will continue in Year 2 until October half term.
  - Revision of old phonemes and fill any gaps.
  - Exploration of alternative graphemes and pronunciations.
  - Application of our phonics to spelling.
- Reading practice sessions throughout the week focusing on 3 different skills: decoding, prosody and comprehension.
- All children will take home a decodable book focusing on the same focus sounds. They will keep this book for a whole week.
  - Please use the prompts inside the front and back cover to support your child as they read. We ask that the book comes to school every day.



# Reader of the Week



- Each week I will choose a reader of the week.
- This child will be celebrated in class on a Friday, and given a certificate.
- They will also take home a suitcase containing a teddy, hot chocolate and a book. This is to be enjoyed over the weekend and returned to school the following Monday. Please encourage your child to take care of the items, so that every child can have a chance to enjoy this!



# Home Learning



- Weekly home learning tasks will focus on consolidation.
- Set on a Friday and handed in on a Wednesday.
- Children will receive English and Maths home learning.
  - They may get half termly home learning linked to RE, Geography or History.
- Reading:
  - Children will receive one book linked to their focus GPCs.
  - Please read at least 3 times a week focusing on a particular skill:
    - Decoding, prosody and comprehension.
  - Friday: Reading for pleasure.
- Spellings: a weekly list of words to learn with related activities to help practise the pattern.



# Feedback Expectations

- Verbal feedback is a priority.
- Written feedback will be given as follows
  - Consistent use the codes detailed on the marking policy.
- Some work may be published.
- Children will have one in-depth mark in RE, Science and Learning Themes per topic.
- Children will receive Next Steps in Maths, once a week.
- Opportunities for Self and Peer Assessment will be introduced in activities.



SACRED HEART CATHOLIC PRIMARY		
Achievement	✓	Correct
	☆ 1HP/2HP/3HP	Meeting Expected Learning Outcome House Points 1HP – Good Learning Outcome 2HP – Outstanding Learning Outcome 3HP – Exceptional Learning Outcome (visit Headteacher)
	LO + LO = LO -	You have exceeded the learning outcome You have met the learning outcome You have not quite met the learning outcome
Improvement	● The cat on the mat.	Incorrect
	^	Words missing
	~~~~~	Check this
	because sp	Spelling error For Year 5 and Year 6 no circle, code in margin
	smile. How are you p //	Missing punctuation For Year 5 and Year 6 no circle, code in margin Start a new line or paragraph
	NS VF	Moving forward comment/next steps Verbal feedback given
Assessment	✓	This is great!
	😊 😐 😞	Show us how you think you have done with your learning
	AS	Adult Supported Learning
	GG	Guided Group Learning
	P	Paired Learning
	IND	Independent learning where this follows guided or supported learning



# Talk to Us!



- Provisional dates are incoming!
- Please do not hesitate to contact me:
  - If you are worried about any aspect of your child's learning, well-being or experience at school.
  - If you have questions or need clarification about school routines or home learning details.
- I will try to respond to emails received within 48 hrs.
  - [esheehan@sacredheart.richmond.sch.uk](mailto:esheehan@sacredheart.richmond.sch.uk)
  - If your concern is urgent, please notify the office.

**THANK YOU** for such a positive start to the year!

- Your support and positivity means a lot to Sacred Heart.
- Any questions?